



CAPABILITIES, OPPORTUNITIES,
PLACES AND ENGAGEMENT

25 April 2023, Bruxelles

***SOCIAL INCLUSION PLANS, SUPPORTED BY
INTEGRATED MODELS OF SERVICE PROVISION***

Sara Paternoster

Sustainability & network developer and Clinical supervisor

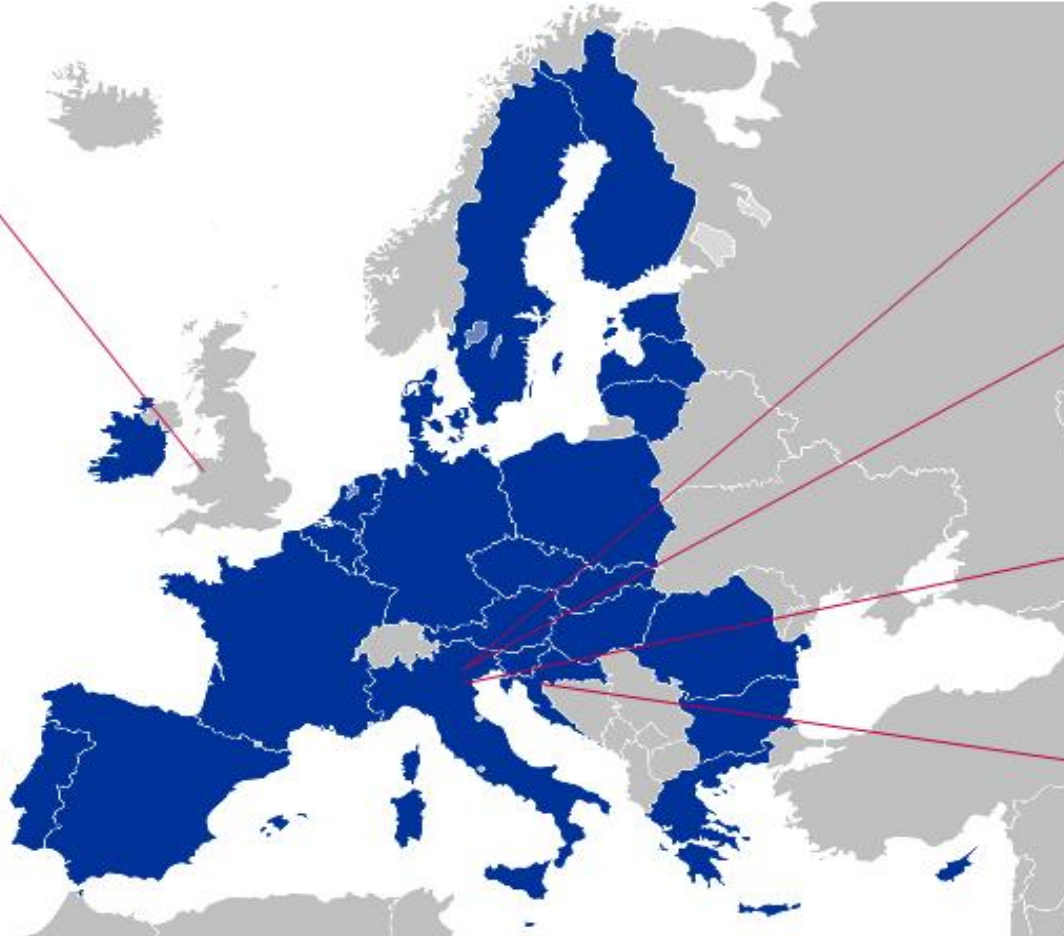


Co-funded by Programme for Employment
and Social Innovation (EaSI)
of the European Union

This presentation reflects the authors' views and the
European Commission cannot be held responsible for any
use that may be made of the information contained herein.



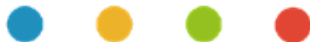
THE CONSORTIUM: 7 PARTNERS FROM 4 EUROPEAN COUNTRIES



PROVINCIA AUTONOMA DI TRENTO



EUROPSKA
ZAKLADA ZA
FILANTROPIJU
I DRUSTVENI
RAZVOJ



Co-funded by Programme for Employment and Social Innovation (EaSI) of the European Union

THE PROJECT IN BRIEF - 1

DURATION: *24 MONTHS (January 2022 – December 2023)*
European Programme for Employment and Social Innovation
(EaSI)

TARGET: *15- 29 in NEET (Neither in Education, Employment or Training)*
situation
Vulnerable + less vulnerable youth + extremely disadvantaged people
Hard to reach

CHARACTERISTICS: *Women more than men*
Unavailable and disengaged
Often unregistered by public employment services + “off the radar”

THE PROJECT IN BRIEF - 2

PILOT SITES: *Italy and Portugal*
Around 300 young people per site

PURPOSE: *Implementation and evaluation of an accompaniment intervention*
Holistic / personalised / integrated / shared plan
Cooperation between public authorities and nongovernmental organisations
Relational proximity approach

PATHS: *Social inclusion + more autonomy + higher well-being*
Education or training/volunteering or work



DISTANCE OF NEETs FROM THE LABOUR MARKET: FACTORS

LIFESTYLE: *Individual factors (e.g. social isolation, substance use problems)*

MENTAL HEALTH: *Cognitive impairment
Psychiatric sub-threshold and full-blown symptoms
Reduction in daily / social / intra- / inter- personal functioning*

SOCIAL NETWORKS: *Weak social ties (e.g. family and neighborhood)
Lack of access to educational, social and health services*

ECONOMIC/ENVIRONMENTAL: *Low level of education
Low family income
Migrant background
Living in remote areas
Hardships not always visible*

SOCIAL PRESCRIBING & SUPPORT OF YOUNG IN NEET SITUATION

RECOMMENDED INTERVENTIONS ON NEETS (EUROPEAN COMMISSION, 2018)

Adapting services and activities to the needs/ assets

***Cooperation among actors (Young person, peers,
family, community, link worker, services)***

One-stop shop

***Safe environment to facilitate the young person's
expression of potential and the building of a trusting
relationship***

Active search (outreach)

SOCIAL PRESCRIBING / RELATIONAL PROXIMITY

***Assets of the area (e.g. services,
organisations, volunteerism,
infrastructure, social networks)***

***Assets of the individual (by
targeting needs and also skills,
abilities, interests, hopes)***

***Assets of the link worker
(relational skills, knowledge of the
community, flexibility and so on)***

***Assets of local and regional
council (by adapting existing and
identifying new policies/resources)***



LINK WORKER: MAIN CHARACTERISTICS

ROLE

Helping in building bridges with/between the young person, family, community, services, ...

Agreeing with the young person a tailored action plan

Offering support to the implementation of the action plan to increase its chances of success

Linking with other members of the team and asking for support / supervision when needed

SKILLS

Personal skills: relationship, listening, empathy, respect, ...

Professional skills: formation, continuing professional development, general and specialist experience, ability to start and support change, coaching, counselling, ...

Organisational skills: vision, time management, flexibility, networking, creativity, risk assessment and management, ...

Group work: valuing the others, integration, facilitation, clarity of roles and responsibilities, ...



TOOLS - 1

Individualised action plan (Social inclusion plan)

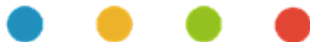
Co-produced between the youth and the link worker

Aiming to create links between the youth and the community

Including:

- *risk and vulnerability assessment*
- *motivational coaching*
- *goals and objectives*
- *monitoring and adjusting outcomes*
- *protective measures (especially for the younger group)*

**ACTION
PLANS**



TOOLS - 2

Local infrastructure with outreach capacity, accessibility, flexibility of use

Social, cultural, supportive and economy space to promote citizens' participation and sense of belonging and stakeholders' cooperation

Place to foster a local relational proximity community network to meet and share ideas and projects, to work together for social-occupational inclusion and social-health innovation

Activities of promotion, social inclusion, cultural change and of projects of volunteering, training, employment of young people in NEET situation

HUBS



TOOLS - 3

General and local decision makers and funders

Local communities

Services, organisations (public, private, no profit), professionals

Families and neighbourhood

Schools, youth centres, sport centres, others

The youth and the youth in NEET situation

Whose interest is to help the young people in NEET situation to establish relationships, socialise, go back to school, start a training programme or a working experience?

INTEGRATED MATRIX



EXAMPLES - 1

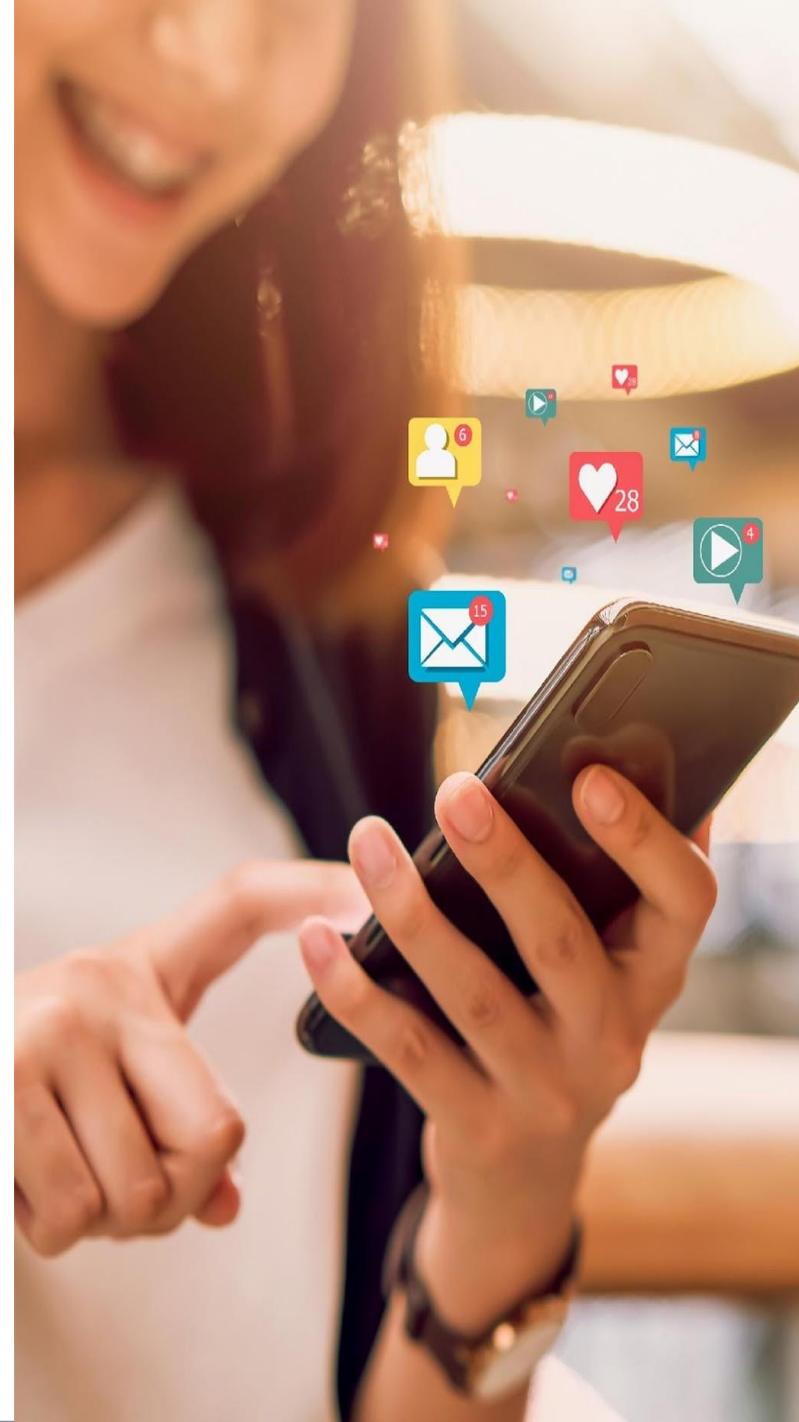
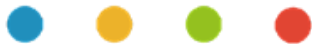
Need of a language from the young people to the young people

Young people who can write music, write lyrics, design logos/images, play instruments, sing and rap

An organisation which offers a recording room

Link workers' support and professionals volunteering

⇒ Song



EXAMPLES - 2

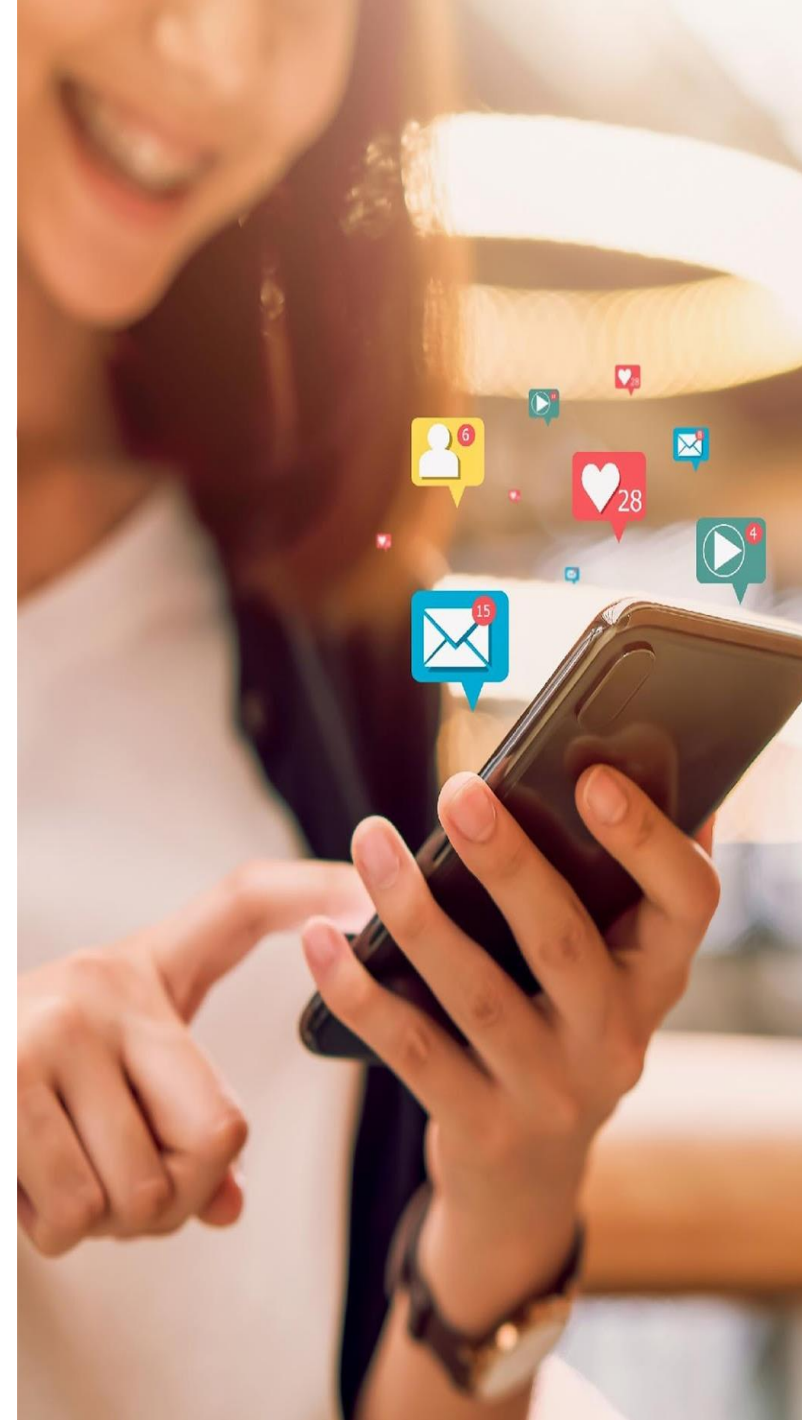
Need of dissemination and gathering information to/from the local community regarding the project, availability of training places, funding, facilities and opportunities

Touristic places, shops and firms that struggle to find employees

Young people visit local facilities, shops, centres to leave leaflet, interview, network, collect availability, meet people, fight stigma and help to change culture

Link workers' support and professionals volunteering

⇒ Building bridges



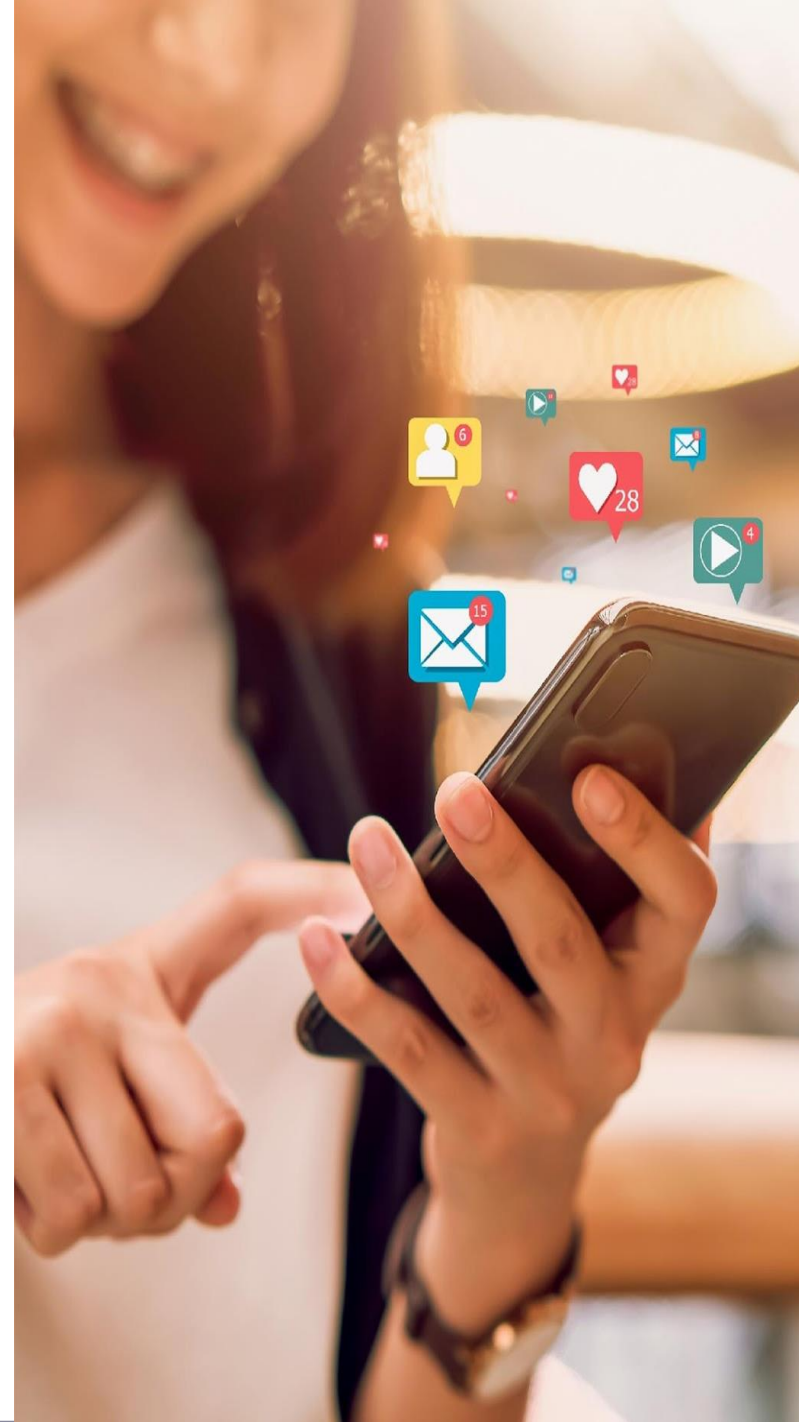
EXAMPLES - 3

Need of meeting local communities to share information about the project, ideas and proposals

A camper that tours the region with young people and professionals working in COPE spending the day in a strategic location of small cities ending with a meeting with the community in a welcoming venue

Involvement of the communities at any stage of the tour (organisation, authorisation, publicity)

⇒ Young people in NEET situation write to ask for help, families ask support, media disseminate information, citizens and councils offer their help



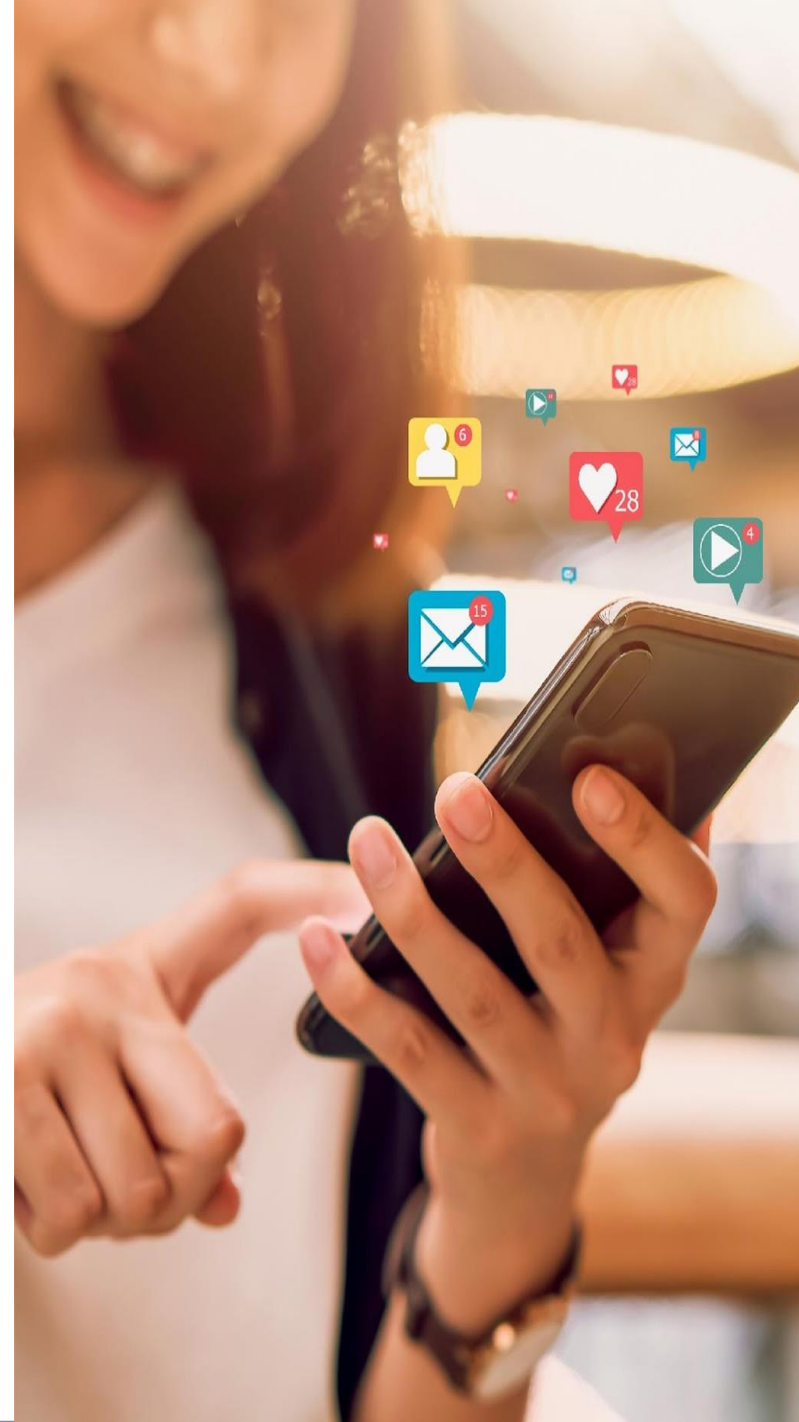
EXAMPLES - 4

Need of facilities that offer socialisation, training, education and working experience

A sport and archery centre that organises events and participates into exhibitions and competitions

Young people who need socialisation, training, work experience





⇒ Young people can learn and practice sport, help with the setting up of events, participate in specific activities, help with promoting the image of the project, of the centre and of themselves



THANK YOU!

Sara Paternoster

Autonomous Province of Trento

-  COPE@provincia.tn.it
-  Web <https://copeproject.eu>
-  Twitter @COPEprojectEU
-  sara.paternoster@provincia.tn.it



PROVINCIA AUTONOMA DI TRENTO



Co-funded by Programme for Employment
and Social Innovation (EaSI)
of the European Union

This presentation reflects the authors' views and the
European Commission cannot be held responsible for any
use that may be made of the information contained herein.

